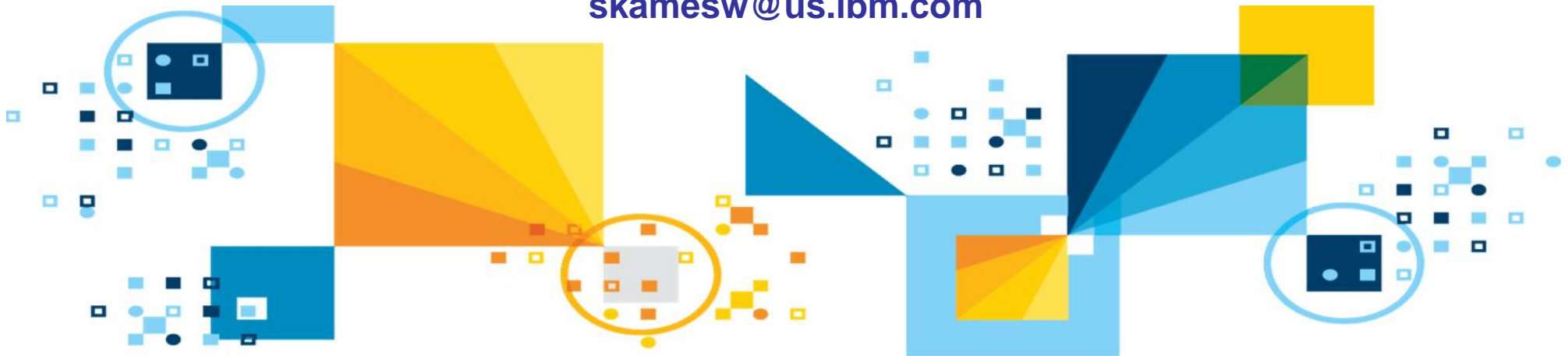


Self Management of DB2 Systems using Data Server Manager

Sowmya Kameswaran
Technical Lead – DB2 Tools Modernization
skamesw@us.ibm.com



DBA's Productivity cycles



Administration

- helps you manage, and maintain complex database environments for increased productivity and optimized use of system resources



Performance Tuning

- helps you improve query workload performance



Identifying Environment changes

- centralized management of database and client configuration



Troubleshooting

- Improves production application workloads

The Growing z/OS Skills Gap

- Expert DB2 z/OS skills are dwindling
 - Experienced DBAs and SysProgs continue to retire
 - New DBAs and SysProgs take years to become “experienced”
 - Industry wide – modern employees spend less time in a single role
 - Becoming less likely to find as many 25+ year experienced DBAs and SysProg

- Yet, the need for expert DBA / SysProg skills is growing
 - Demands for 24x7 high performance operation continue to increase
 - Allowed outage windows are shrinking and are less frequent
 - Maintenance done in those windows is more important than ever
 - Increasing system complexity makes planning, maintaining, and troubleshooting more difficult and time consuming
 - Quantity of data to be managed is growing.



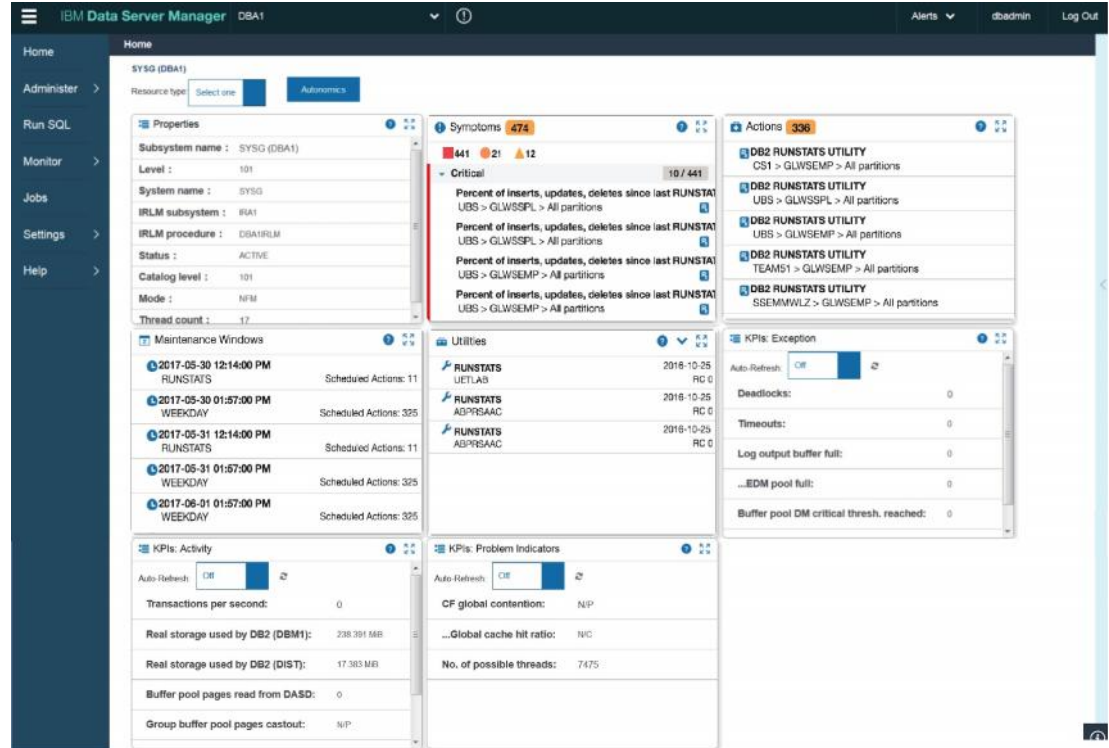
Self-Managing DB2 Systems

Smart Interfaces

- Consolidate information from multiple sources
- Simplify complex information (Intuitive visuals)
- Improve Productivity (Integrated assistance)
- Zero install – web based

Smart Infrastructure

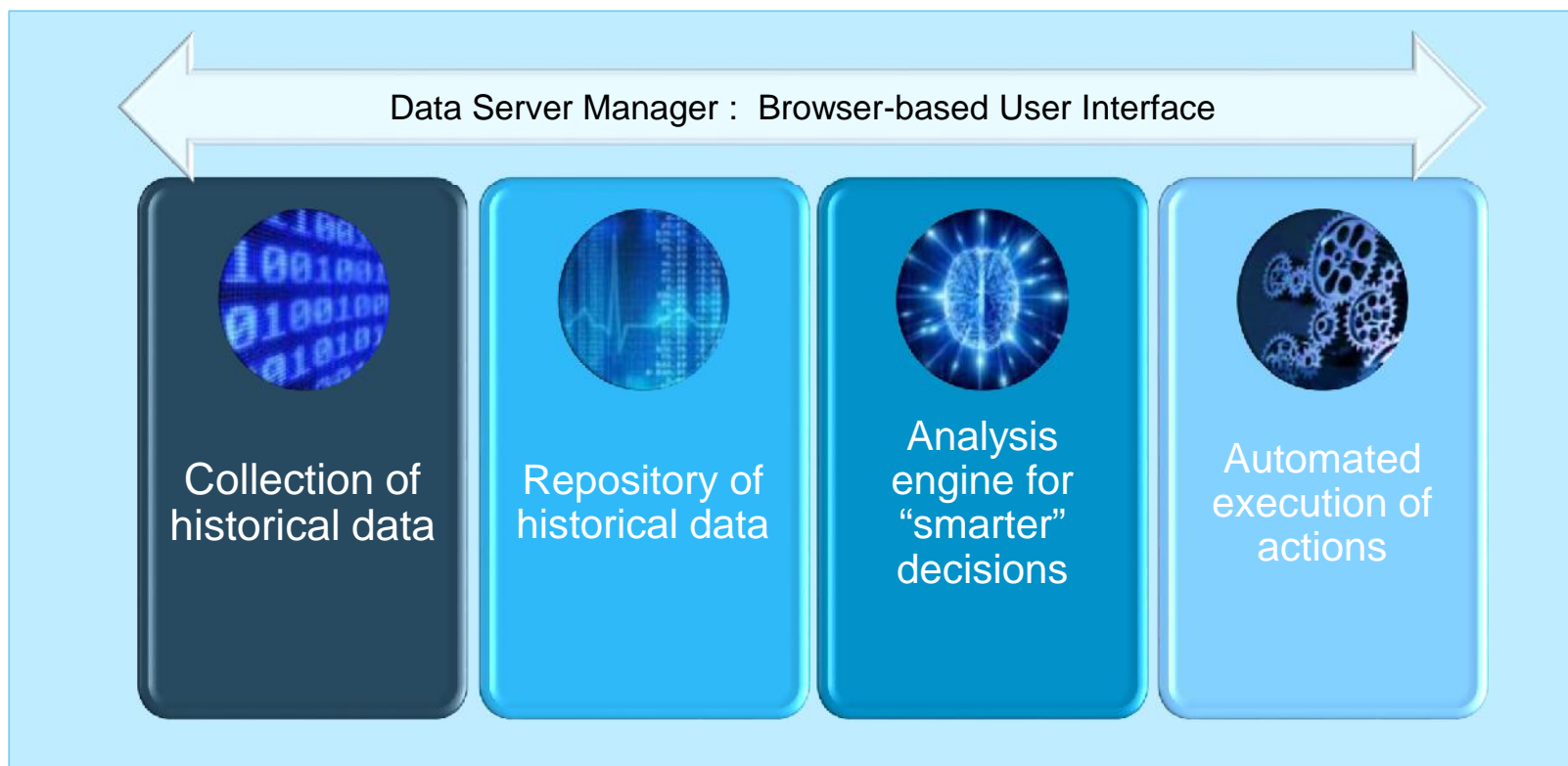
- Automate Data Analysis
- Automate Data Driven Decisions
- Automate Decision Executions



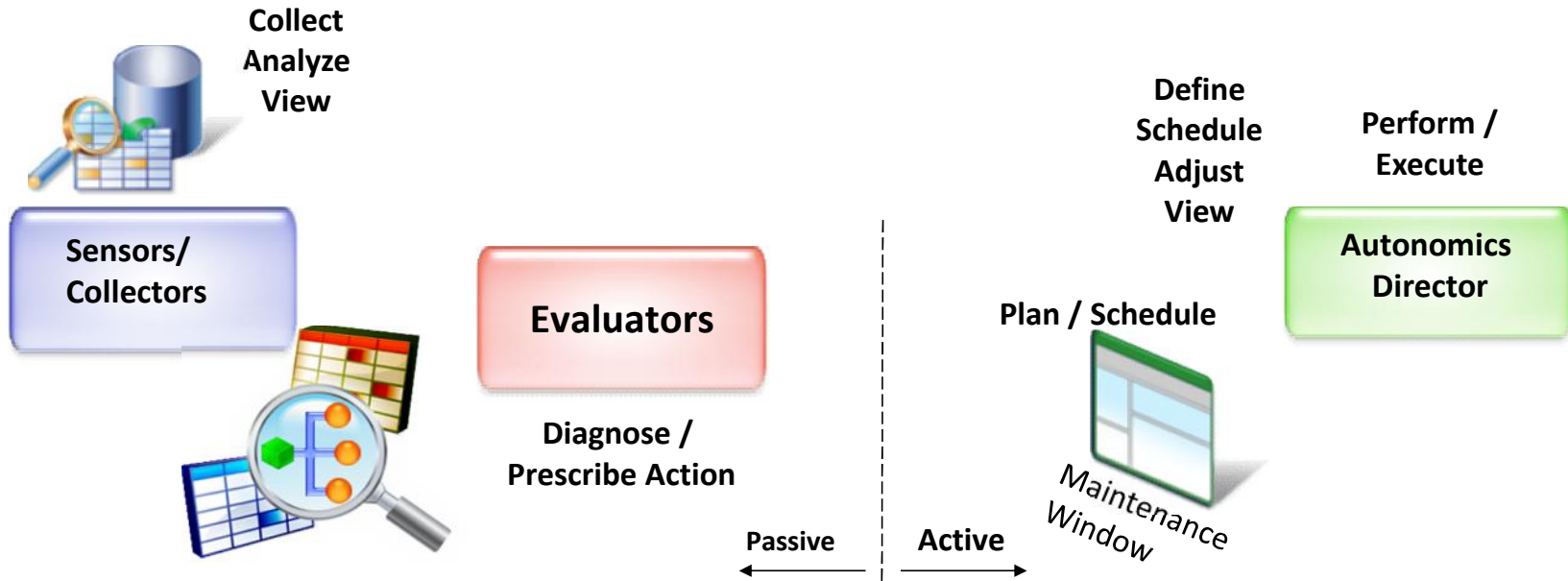
The screenshot displays the IBM Data Server Manager (DSM) interface for a DB2 system. The interface is a dashboard with a left-hand navigation menu and a main content area. The main area is divided into several panels:

- Properties:** Subsystem name: SYSO (DBA1), Level: 101, System name: SYSO, IRLM subsystem: #BA1, IRLM procedure: DBAIRLM, Status: ACTIVE, Catalog level: 101, Mode: NFM, Thread count: 17.
- Symptoms:** 474 symptoms, with 441 critical, 21 warning, and 12 info. A list of symptoms is shown, including "Percent of inserts, updates, deletes since last RUNSTAT" for various tablespaces.
- Actions:** 336 actions, including "DB2 RUNSTATS UTILITY" for various tablespaces.
- Maintenance Windows:** A list of scheduled actions, including "RUNSTATS" for various tablespaces.
- Utilities:** A list of utilities, including "RUNSTATS" for various tablespaces.
- KPIs: Exception:** A list of exception metrics, including "Auto Refresh", "Deadlocks", "Timeouts", "Log output buffer full", "...EDM pool full", and "Buffer pool DM critical thresh. reached".
- KPIs: Activity:** A list of activity metrics, including "Transactions per second", "Real storage used by DB2 (DBM1)", "Real storage used by DB2 (DIST)", "Buffer pool pages read from DASD", and "Group buffer pool pages castout".
- KPIs: Problem Indicators:** A list of problem indicators, including "CF global contention", "...Global cache hit ratio", and "No. of possible threads".

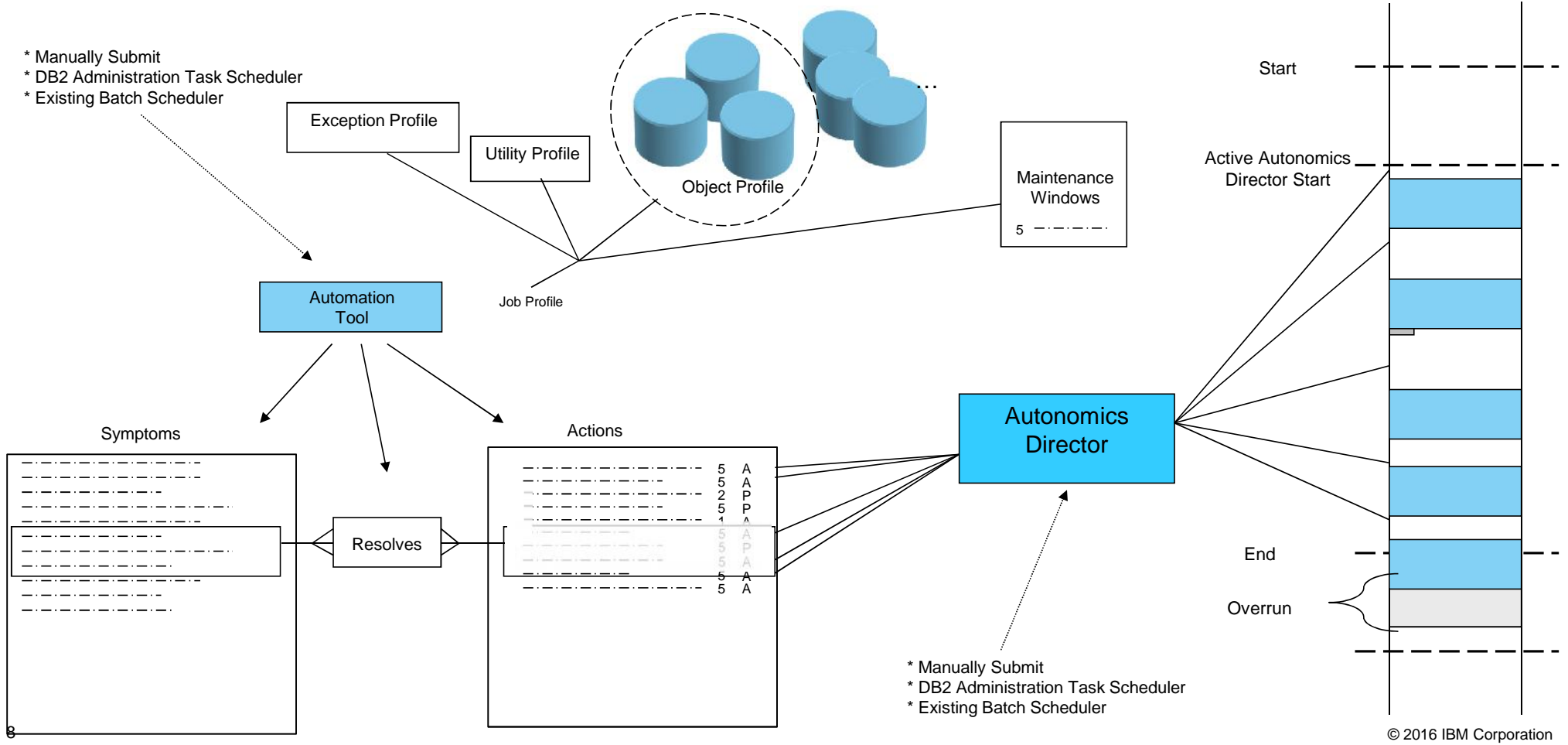
IBM DB2 Autonomics: Infrastructure Overview



Viewing Utility Autonomics from the Data Server Manager Console



DB2 Utility Autonomics Example



Demo

DB2 Tools – Utilities Suite and Data Server Manager

DB2 Utilities Solution Pack for z/OS

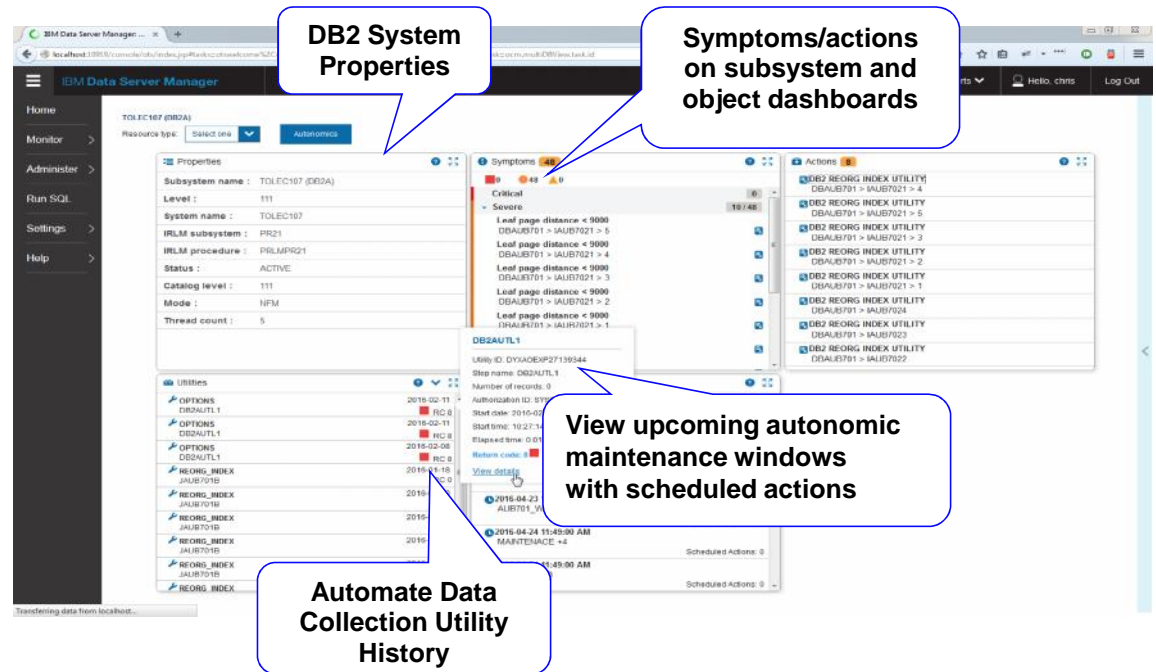
- Comprehensive Solution
- Best Practice data management
- Evolving toward “self management” of utilities

Tools

- DB2 Automation Tool
- Utility Enhancement Tool
- DB2 Autonomics Director

Modernization with Data server Manager

- Consolidate information across the entire enterprise
- Automated analysis of collected DB2 operational data
- Reduced learning curve



You can start here

- Up and running with Data Server Manager

[Data Server Manager Wiki](#)

[DSM Marketplace](#)

- IBM DB2 Utility Solution Pack

[DB2 Utilities Solution Pack](#)

- “How DB2 Autonomics is Helping PennDOT Innovate” - Webcast by **Perry Shindle** on June 20th, 2017.

Register on - <http://bit.ly/2mWdeSY>

- “Our Journey to DB2 Autonomics” by **Perry Shindle** of Pennsylvania Department of Transportation - <http://www.worldofdb2.com/profiles/blogs/our-journey-to-db2-autonomics>

- Any questions. Don't hesitate to reach out to

- Sowmya Kameswaran - skamesw@us.ibm.com
- Baha Majid - bmajid@us.ibm.com

Thank
You